



# Pre - Floreo Check In

Visual Supports For Young & Early Learners



# How do you feel?



**I feel good!**



**I don't feel good.**



# How does your head feel?



**My head feels good!**



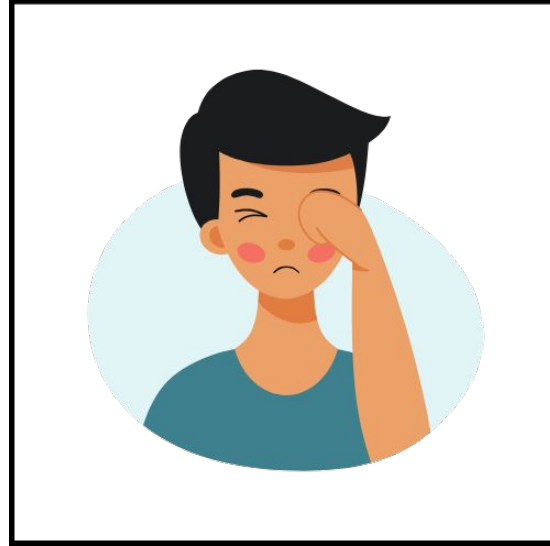
**My head hurts.**



# How do your eyes feel?



**My eyes feel good!**



**My eyes hurt.**



# How does your tummy feel?



**My tummy feels good!**



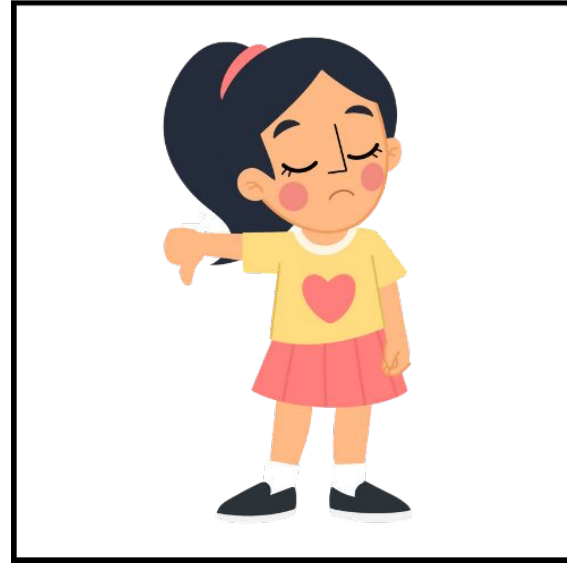
**My tummy hurts.**



# Do you want to learn with Floreo?



**Yes!**



**No, I don't want to.**





# Pre - Floreo Check In

Visual Supports For Adolescent  
& Young Adult Learners



# How do you feel?



**I feel good!**



**I don't feel well.**





# How does your head feel?



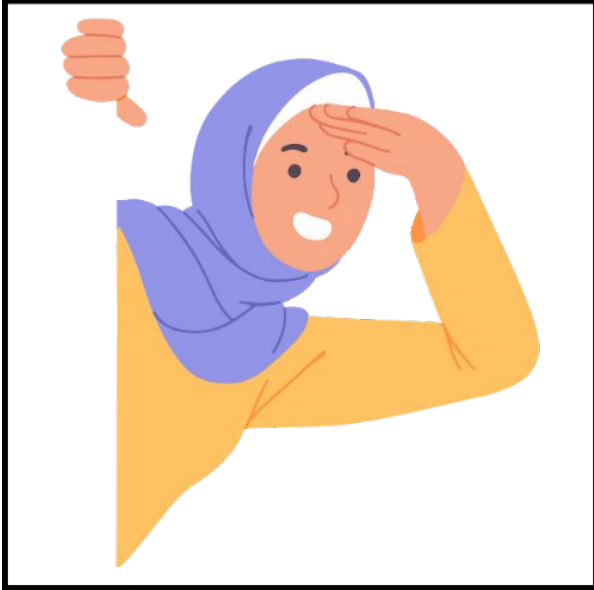
**My head feels good!**



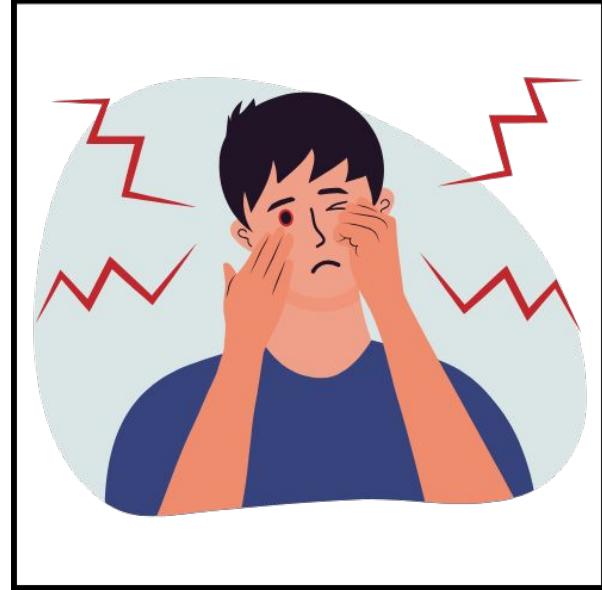
**My head hurts.**



# How do your eyes feel?



**My eyes feel good!**



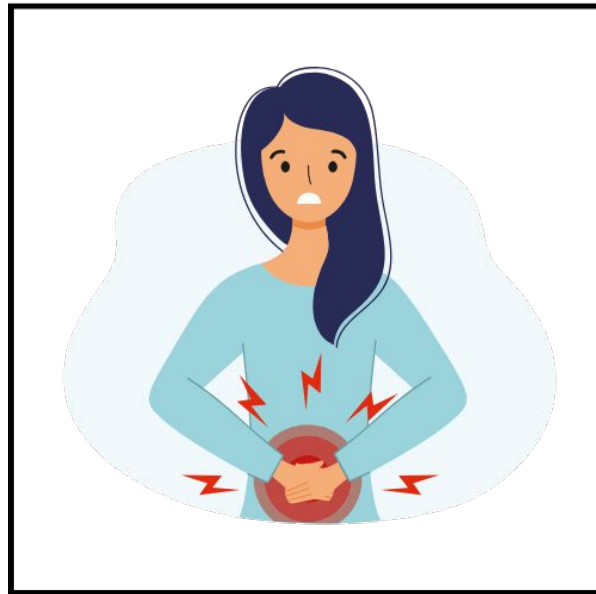
**My eyes hurt.**



# How does your stomach feel?



**My stomach feels good!**



**My stomach hurts.**



# Do you want to learn with Floreo?



**Yes!**



**No, I don't want to.**





# Pre - Floreo Check In

Visual Supports For Adult  
Learners



# How do you feel?



**I feel good!**



**I don't feel well.**



# How does your head feel?



**My head feels good!**



**My head hurts.**



# How do your eyes feel?



**My eyes feel good!**

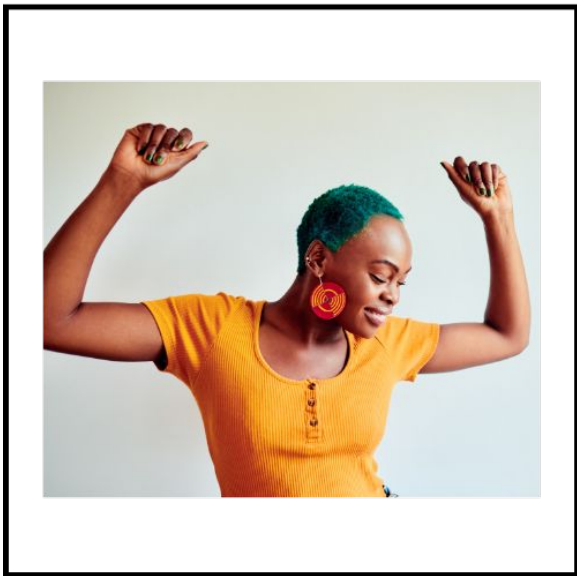


**My eyes hurt.**





# How does your stomach feel?



**My stomach feels good!**



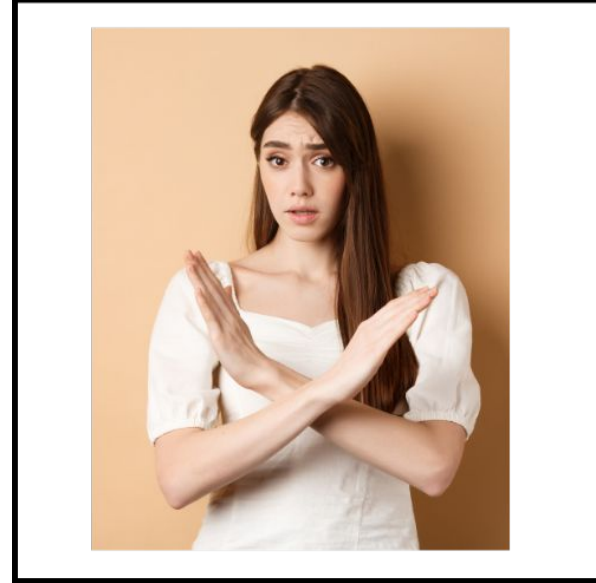
**My stomach hurts.**



# Do you want to learn with Floreo?



**Yes!**



**No, I don't want to.**

